



2018
Town of Oro Valley

Small Wireless Facilities in the Right-of-Way

**Design Standards, Concepts and
Requirements**

Town of Oro Valley
Design Standards, Concepts and Requirements
Small Wireless Facilities in the Right-of-Way

Table of Contents	Page i
Definitions	Page 1-2
Standard Design Requirements for Small Wireless Facility on Existing Streetlights	Page 3-4
Standard Design Requirements for Small Wireless Facility on Existing Traffic Signal Pole	Page 5-7
Standard Design Requirements for Small Wireless Facility on Existing Utility Pole	Page 8-9
Standard Design Requirements for Wireless Facility on New Wireless Support Structure	Page 10-11
Common Standard Design Concepts, Requirements, and Details	Page 12-16
Town of Oro Valley Contact Information	Page 17
Exhibit A1 Calculating Height of Existing Streetlight	Page 18
Exhibit A2 Calculating the Height of Existing Streetlight with Integrated Mast Arm	Page 19
Exhibit B Calculating the Height of Existing Traffic Signal Pole	Page 20
Exhibit C “Dog House” and External Cable Chase	Page 21
Exhibit D1 Panel Antenna Shroud – 45 Degrees	Page 22
Exhibit D2 Panel Antenna Shroud – 90 Degrees	Page 23
Exhibit D Example of Electrical Meter Pedestal	Page 24

Definitions
Standard Design Requirements for Small Wireless Facility

“Antenna” means communications equipment that transmits or receives electromagnetic radio frequency signals and that is used in providing wireless services.

“Antenna Mounting Bracket” means the hardware required to secure the antenna to the pole.

“Antenna Mounting Post” means the vertical post or pipe that the antenna mounting bracket is mounted to in order for the antenna to be attached to the pole.

“Antenna Shroud” means the three-sided cover that is mounted at the base of the antenna to conceal the appearance of the cables and wires from the hand-hole port on the pole to the bottom-fed antenna.

“Canister Antenna” means the canister or cylinder style housing used to conceal the antenna(s), amplifier(s), radio(s), cables, and wires at the top of a pole.

“Communications Equipment” means any and all electronic equipment at the Small Wireless Facility location that processes and transports information from the antennas to the Wireless Provider’s network.

“Dog House” means the plastic or metal attachment to the base of a pole that covers the transition point of underground cables and wires to the vertical section of the pole.

“Ground Mounted Equipment” means any communications equipment that is mounted to a separate post or to a foundation on the ground.

“Light Emitting Diode” also referred to as “LED” is a type of lighting fixture installed on Town streetlight and traffic signal poles.

“Light Fixture” means the lighting unit or luminaire that provides lighting during the evening hours or during the hours of darkness.

“Luminaire Mast Arm” means the horizontal post that attaches the light fixture to the streetlight pole or traffic signal pole.

“Omni-directional Antenna” also referred to as an “omni antenna” this antenna is round in shape, like a pipe, and may be about one (1) inch diameter up to about six (6) inches diameter.

“Outside Diameter” also referred to as “OD” means the points of measurement, using the outer edges of a pole, pipe or cylinder.

“Panel Antenna” means the style of antenna that is rectangular in shape and with dimensions that are generally four (4) feet to eight (8) feet in height, by eight (8) inches to twelve (12) inches wide, and four (4) inches to nine (9) inches deep.

“Remote Radio Heads (RRH) / Remote Radio Units (RRU)” means the electronic devices that are used to amplify radio signals so that there is increased performance (farther distance) of the outgoing radio signal from the antenna.

“Right-of-way” as defined for wireless sites in A.R.S. §9-591(18) means the area on, below or above a public roadway, highway, street, sidewalk, alley, or utility easement. Right-of-way does not include a Federal Interstate Highway, a state highway or state route under the jurisdiction of the Department of Transportation, a private easement, property that is owned by a special taxing district, or a utility easement that does not authorize the deployment sought by the wireless provider.

“Sight Distance Easements” means the area of land adjacent to an intersection, driveway or roadway that has restrictive uses in order to preserve the view of oncoming or crossing vehicular and pedestrian traffic by drivers in vehicles attempting to merge with traffic or enter a roadway.

“Sight Visibility Triangles” means the traffic engineering and safety concept that requires clear view by the driver of a vehicle to crossing traffic at a stop sign, driveway or intersection. In order to achieve clear visibility of the cross traffic, the land areas in the sight visibility triangle has specific maximum heights on landscaping, cabinets, and other potential view obstructions.

“Signal Head” means the “Red, Yellow and Green” light signals at a signal-controlled intersection.

“Signal Head Mast Arm” means the horizontal pole that has the signal heads mounted to it and attaches to the traffic signal pole.

“Small Wireless Facility” as defined in A.R.S. 9-591(19), means a Wireless Facility that meets both of the following qualifications:

(c) All antennas are located inside an enclosure of not more than six (6) cubic feet in volume or, in the case of an antenna, that has exposed elements, the antenna and all of the antenna’s exposed elements could fit within an imaginary enclosure of not more than six (6) cubic feet in volume.

(d) All other wireless equipment associated with the facility is cumulatively not more than twenty-eight (28) cubic feet in volume, or fifty (50) cubic feet in volume if the equipment was ground mounted before the effective date of this section. The following types of associated ancillary equipment are not included in the calculation of equipment volume pursuant to this subdivision:

- (i) An electric meter.
- (ii) Concealment elements.
- (iii) A telecommunications demarcation box.
- (iv) Grounding equipment.
- (v) A power transfer switch.
- (vi) A cutoff switch.
- (vii) Vertical cable runs for the connection of power and other services.

“Stealth and Concealment Elements” means the use of shrouds, decorative elements, design concepts and faux elements so that a small wireless facility can be designed to blend in with the surrounding streetscape with minimal to any visual impact.

“Utility Pole” as defined in A.R.S. §9-591(21) means a pole or similar structure that is used in whole or in part for communications services, electric distribution, lighting or traffic signals. Utility pole does not include a monopole.

Town of Oro Valley
Standard Design Requirements
Small Wireless Facility on Existing Streetlight

The following design standards shall apply, in addition to the *Common Standards Design Concepts, Requirements and Details* that is included in this document, to a Small Wireless Facility (SWF) proposed for a location with an existing Town-owned or third party-owned streetlight in the Town of Oro Valley Right-of-way (ROW). These design standards are not exhaustive and the Town, as the owner, keeper and manager of the ROW retains the right to modify or adjust the requirements on a case-by-case basis.

A. Pole Criteria:

1. *Purpose of Streetlight Pole:* The primary purpose of the pole shall remain as a pole structure supporting a streetlight luminaire and related streetlight fixtures used to provide lighting to the Town ROW. The attachment of wireless equipment to an existing streetlight pole or to a replacement pole that impedes this primary purpose will not be approved.
2. *General Requirement:*
 - a) An SWF shall be designed to blend in with the surrounding streetscape with minimal to any visual impact.
 - b) A replacement pole shall match the Town of Oro Valley standard streetlight pole, as closely as possible, subject to more specific criteria below.
 - c) One spare replacement pole shall be provided, by the wireless provider, to Town in advance so the pole can be replaced promptly in case of a knockdown. The wireless provider shall be responsible for re-installing wireless facilities and related equipment on the replacement pole.
 - d) The wireless provider shall be responsible for relocation or re-installation of the pole and related wireless facilities in the case of road widening or other construction in the right-of-way.
 - e) All plans shall be signed and sealed by a Professional Engineer.
 - f) All other details in the Town of Oro Valley Standard Requirements shall apply.
3. *Specific Criteria:*
 - a) New or Replacement Pole Height
A new or replacement pole may be installed without zoning review if one of the two height requirements is met:

- 1) Up to a ten (10) foot increase, not to exceed fifty (50) feet total (whichever is less), per A.R.S. §9-592(I); or
 - 2) Up to forty (40) feet above ground level, per A.R.S. §9-592(J).
- b) Overall Height of Replacement Pole
- 1) The “base” height of an existing streetlight pole shall be the height of the vertical pole section from the existing grade. The height of the luminaire mast arm, if higher than the vertical pole section, shall not be used to determine the new overall height of the replacement pole.
 - 2) If the antennas are the highest vertical element of the site, then the new overall height of the replacement pole is measured from the existing grade to the top of the canister, top of the omni-directional antenna, or the top of the panel antenna.
- c) Increase in Outside Diameter (OD) of Pole
- The non-tapered replacement pole outside diameter (OD) of the base section shall be equal to the top section, and the OD shall not exceed eight and five-eighths (8-5/8) inches (the pole manufacturing industry standard OD for an 8 inch diameter pole) or a 100% increase in diameter of the original pole, whichever is less.
- d) Luminaire Mast Arms
- 1) All luminaire mast arms shall be the same length as the original luminaire arm, unless the Town requires the mast arm to be different (longer or shorter) based upon the location of the replacement pole.
 - 2) Unless otherwise approved, all luminaire mast arms shall match the arc (if applicable) and style of the original luminaire arm.
 - 3) The replacement luminaire mast arm shall be at the same height above the ground as the existing luminaire.
- e) Luminaire Fixtures
- 1) All replacement poles shall have the Town standard light-emitting diode (LED) light fixture installed.
 - 2) All replacement light fixtures shall have a new Town standard photo-cell or sensor provided by the wireless provider.
- f) Pole Foundation
- 1) All pole foundations shall conform to the Town’s adopted standards and specifications on streetlight design and shall be modified for wireless communications equipment and cables.
 - 2) The Town, in its sole discretion, may allow the pole foundation design to be “worst case” for all soil conditions.
 - 3) A separate, one-inch diameter conduit shall be installed in the pole foundation for the Town’s luminaire wire and any additional Town wires or

cables. The Town's conduit shall be trimmed to three (3) inches above the top of the pole foundation.

- 4) The height of the pole foundation shall be two (2) inches above finished grade. If the pole foundation encroaches into any portion of the sidewalk, then the pole foundation shall be flush with the sidewalk.
 - 5) Shrouds for the streetlight pole mounting bolts may be required for the replacement pole.
- g) Painting of Replacement Pole shall be per Town of Oro Valley specifications.
- h) Painting Antennas and Mounting Equipment
- 1) All antenna mounting brackets and hardware, antenna mounting posts, cables, shrouds and all other equipment mounted on a new or replacement pole shall be painted a color specified by the Town.
 - i) Wireless provider shall install pole numbers on each replacement pole (to match the number on the existing streetlight pole being replaced) per Oro Valley standards requirements

**Town of Oro Valley
Standard Design Requirements
Small Wireless Facility on Traffic Signal Pole**

The following design standards shall apply, in addition to the *Common Standards Design Concepts, Requirements and Details* included in this document, to a Small Wireless Facility (SWF) proposed for a location with an existing Town-owned traffic signal in the Town of Oro Valley Right-of-way (ROW). These design standards are not exhaustive and the Town, as the owner and manager of the ROW retains the right to modify or adjust the requirements on a case-by-case basis.

A. Pole Criteria:

1. *Purpose of Traffic Signal Pole:* The primary purpose of the traffic signal pole shall remain as a pole structure supporting a traffic signal and related streetlight fixtures used to provide traffic control and lighting to the Town ROW. The attachment of wireless equipment to a new or replacement traffic signal pole that impedes this primary purpose will not be approved.
2. *General Requirement:*
 - a) An SWF shall be designed to blend in with the surrounding streetscape with minimal visual impact.
 - b) A replacement pole shall match the Town of Oro Valley standard traffic signal pole, as closely as possible, subject to more specific criteria below.
 - c) One spare replacement pole shall be provided, by the wireless provider, to Town in advance so the pole can be replaced promptly in case of a knockdown. The wireless provider shall be responsible for re-installing wireless facilities and related equipment on the replacement pole.

- d) The wireless provider shall be responsible for relocation or re-installation of related wireless facilities in the case of road widening or other construction in the right-of-way causing an existing pole with their wireless facilities already present, to be relocated.
- e) All plans shall be signed and sealed by a Professional Engineer.
- f) All other details in the Town of Oro Valley Traffic Signal standard shall apply.

3. *Specific Criteria:*

- a) New or Replacement Pole Height

A new or replacement pole may be installed without zoning review if one of the two height requirements is met:

 - 1) Up to a ten (10) foot increase, not to exceed fifty (50) feet total (whichever is less), per A.R.S. §9-592(I); or
 - 2) Up to forty (40) feet above ground level, per A.R.S. §9-592(J).
- b) Overall Height of Replacement Pole

The height of the replacement pole is measured from grade to the top of the antenna canister or the top of the panel antennas if the antennas are the highest elements.
- c) Increase in Outside Diameter (OD) of Pole
 - 1) If the replacement pole is a taper design, the diameter of the base section of the replacement pole OD shall not exceed twelve (12) inches or a 100% increase in the OD of the base section, whichever is less.
 - 2) If the replacement pole is non-tapered, then the diameter of the base section shall be equal to the top section and the OD shall not exceed twelve (12) inches or a 100% increase, whichever is less.
- d) Signal Head Mast Arms
 - 1) The traffic signal head mast arms shall be the same length as the original signal head mast arm unless the Town requires the mast arm to be different (longer or shorter) based upon the location of the replacement pole.
 - 2) All signal head mast arms shall match the arc (if applicable) and style of the original signal head mast arm.
- e) Luminaire Mast Arms
 - 1) All luminaire mast arms shall be the same length as the original luminaire arm unless the Town requires the mast arm to be different (longer or shorter) based upon the location of the replacement pole.
 - 2) All luminaire mast arms shall match the arc (if applicable) and style of the original luminaire arm.
- f) Signal Heads

- 1) All existing signal heads shall be replaced, at no cost to Town, with new light-emitting diode (LED) signal heads, per Town of Oro Valley Traffic Signal Design.
 - 2) All signal heads shall be procured from a Town approved signal heads supplier or manufacturer.
- g) Luminaire Fixtures
- 1) All replacement poles shall have the Town standard LED light fixture installed.
 - 2) All replacement light fixture shall have a new photo-cell or sensor installed to Town standard.
- h) Other Town Elements on Signal Mast Arm or Pole
- All existing emergency signal detection units, video detection cameras, video cameras, cross walk service buttons, cross walk signals, and any other pedestrian or traffic devices shall be replaced with new units by wireless provider and installed at no cost to the Town. All equipment shall be procured from a list of Town approved suppliers.
- i) Signs and Other Misc.
- All street name plates or signs, directional signs and any other Town approved signs shall be replaced with new signs at no cost to the Town. All signs and attachments shall be procured from a list of Town approved suppliers.
- j) Traffic Signal Pole Foundation
- 1) All pole foundations shall conform to the Town's standards and specifications on traffic signal pole design and shall be modified for wireless communications equipment, hand holes and cables.
 - 2) The wireless provider shall install a three (3) inch diameter (OD) conduit in the pole foundation for the Town's cables and wires for the signal heads, luminaire and devices on the signal mast arm and luminaire mast arm. The Town's conduit shall be trimmed to three (3) inches above the top of the pole foundation.
 - 3) In addition to the conduits for the Town's use inside the pole, the wireless provider shall install one of the two options for its cables and wires:
 - a) One, six (6) inch diameter (OD) conduit in the pole foundation; or
 - b) Two, four (4) inch diameter (OD) conduits in the pole foundation. The length of the conduit shall extend from the pole foundation to six (6) inches above the signal head mast arm.
 - 4) Pole Foundation – Height Above Ground Level
 - a) If the pole foundation is in a landscaped or unimproved area, the height of the caisson shall be two (2) inches above finished grade. However, if the pole foundation is adjacent to or within a sidewalk or

ramp, the height of the pole foundation shall be flush with the surface of the immediate area.

- b) Shrouds for the traffic signal pole mounting bolts may be required for the replacement pole.
- k) Poles, Antennas and Mounting Equipment shall be painted a manner and color specified by the Town.
- l) Construction of Traffic Signal
The installation work of the replacement traffic signal pole, including mast arms, signal heads and devices, must be performed by a Arizona licensed Traffic Signal Contractor with a minimum of five (5) years of experience installing traffic signals.

Town of Oro Valley
Standard Design Requirements
Small Wireless Facility on Existing Utility Pole

The following design standards shall apply, in addition to the *Common Standards Design Concepts, Requirements and Details* that is included in this document, to a Small Wireless Facility (SWF) proposed for a location with an existing third party-owned utility pole in the Town of Oro Valley Right-of-way (ROW). These design standards are not exhaustive and the Town, as the owner, keeper and manager of the ROW retains the right to modify or adjust the requirements on a case-by-case basis.

A. Pole Criteria:

1. *Purpose of Utility Pole:* The primary purpose of the pole shall remain as a pole structure supporting a cables and wires used to provide communications services and electric distribution in the Town ROW. The attachment of wireless equipment to an existing third party-owned utility pole that impedes this primary purpose will not be approved.
2. *General Requirement:*
 - a) An SWF shall be designed to blend in with the surrounding streetscape with minimal to any visual impact.
 - b) A SWF mounted on an existing third party-owned utility pole is subject to more specific criteria below.
 - c) All plans shall be signed and sealed by a Professional Engineer.
3. *Specific Criteria:*
 - a) Replacement Pole Height
A replacement pole may be installed without zoning review if one of the two height requirements is met:
 - 1) Up to a ten (10) foot increase, not to exceed fifty (50) feet total (whichever is less), per A.R.S. §9-592(I); or
 - 2) Up to forty (40) feet above ground level, per A.R.S. §9-592(J).
 - b) Overall Height of Replacement Utility Pole

- 1) The “base” height of an existing utility pole shall be the height of the vertical pole section from the existing grade.
 - 2) If the antennas are the highest vertical element of the site, then the new overall height of the replacement pole is measured from the existing grade to the top of the canister or the top of the panel antenna.
- c) Use of Existing Pole – Wood
- 1) An existing wood pole used for a SWF shall have the antennas contained within an eighteen (18) inch (OD) canister mounted at the top of the pole.
 - 2) Unless otherwise approved, the cables and wires from the base of the pole to the antennas shall be installed in a conduit or cable chase outside of the pole, facing away from the street or away from on-coming traffic.
 - 3) If a “dog house” (see *Exhibit C*) is required as a transition point connecting the underground cables and wires from the ground mounted equipment to the pole, the Town shall provide the maximum size, dimension and shape of the dog house on a case-by-case basis.
- d) Use of Existing Pole – Metal
- 1) An existing metal pole used for a SWF shall have the antennas contained within an eighteen (18) inch (OD) canister mounted at the top of the pole.
 - 2) Panel antennas on a metal pole shall have the same “RAD center” (center of radiation) so the antennas will be at the same height on the pole.
 - 3) The cables and wires from the base of the pole to the antennas shall be installed in a conduit or cable chase on the outside of the pole, facing away from the street or away from on-coming traffic.
 - 4) If a “dog house” (see *Exhibit C*) is required as a transition point connecting the underground cables and wires from the ground mounted equipment to the pole, the Town shall provide the maximum size, dimension and shape of the dog house on a case-by-case basis.
- e) Painting of Pole and Dog House
- 1) If the replacement pole is an unpainted galvanized pole, the pole shall not be painted or have a finish unless otherwise specified by the Town.
 - 2) If the existing or replacement pole includes a dog house for the transition of the cables and wires to the pole, the dog house shall be painted the same color as the pole or a color specified by the Town.
- f) Painting Antennas and Mounting Equipment
- 1) All antenna mounting brackets and hardware, antenna mounting posts, cables, shrouds and all other equipment mounted on a ~~painted~~ new or replacement pole shall be painted a color specified by the Town.
 - 2) If the antenna is mounted on a wood pole, the color of the antenna, antenna canister, mounting brackets and posts, shrouds and cable chases

shall be painted a color specified by the Town that will closely match the color of the wood.

g) Ground Mounted Equipment

The Town may require the ground-mounted wireless equipment to be screened or concealed to reduce the visual impact to the surrounding area. The screening or concealment shall take into account the location of the site, the use of the immediate area, and the existing aesthetic elements surrounding the site.

h) The wireless provider shall obtain written permission from the owner of the utility pole for proposed installation of facilities on the pole, prior to submitting application to the Town.

**Town of Oro Valley
Standard Design Requirements
Small Wireless Facility on New Poles in ROW**

The following design standards, in addition to the *Common Standards Design Concepts, Requirements and Details* that are included in this document, shall apply to a Small Wireless Facility (SWF) that a wireless provider may install in the ROW that is not either: 1) a replacement pole for an existing streetlight, or 2) a replacement pole for an existing traffic signal.

A new wireless support structure, including a monopole that is up to forty (40) inches in outside diameter (OD), shall incorporate the highest level of stealth and concealment of the antennas and wireless equipment in order to minimize the visual impact of the site to the public.

A. Pole Criteria:

1. *Purpose of Wireless Support Structure:* The sole purpose of a new vertical element or wireless support structure is to attach antennas for the provision of wireless services by a wireless provider in the Town's ROW.
2. *General Requirement:*
 - a) A new wireless support structure shall be designed to minimize the visual and aesthetic impact of the new vertical element and associated equipment upon the look, feel, theme, and use of the surrounding area.
 - b) An SWF shall be designed to blend in with the surrounding streetscape with minimal to any visual impact.
 - c) The new wireless support structure shall be architecturally integrated and compatible with the use of the surrounding area.
 - d) The height of the new wireless support structure cannot exceed the maximum allowed height of the zoning district that the site is proposed.
 - e) Pole shall be structurally designed by the wireless facility to support new street lights if the Town proposes to install street lights on the proposed new pole now in the future.
 - f) All plans shall be signed and sealed by a Professional Engineer.

3. *Specific Criteria:*

a) New Pole Height

A new wireless support structure may be installed without zoning review if one of the two height requirements are met, see A.R.S. §9-592(I) and A.R.S. §9-592(J):

A.R.S. §9-592(I) states that the small wireless facility in the ROW is not subject to zoning review and approval in Section 9-594 if the utility pole does not exceed the greater of either:

- 1) Ten feet in height above the tallest existing utility pole, other than a utility pole supporting only wireless facilities, that is in place on the effective date of this section, that is located within five hundred feet of the new, replacement or modified utility pole and that is in the same right-of-way within the jurisdictional boundary of the authority, but no more than fifty feet above ground level.
- 2) Forty feet above ground level.

A.R.S. §9-592(J) states that:

New small wireless facilities collocated on a utility pole or wireless support structure in the right-of-way are not subject to zoning review and approval if they do not extend more than ten feet above the utility pole or wireless support structure and do not exceed fifty feet above ground level.

b) Overall Height of New Pole

The height of the new wireless support structure is measured from grade to top of the antenna canister, or the top of the panel antenna if the antennas are the highest elements of the site. Otherwise, the measured height shall be from existing grade to the highest point of the wireless support structure.

c) Outside Diameter of Monopole

The maximum outside diameter of a monopole, as defined in A.R.S. §9-591(13), shall not exceed forty (40) inches.

d) Stealth and Concealment Elements

As part of the stealth and concealment elements of the wireless support structure, the Town may require the wireless provider to install street name plates, directional signs, and other decorative signs or artistic elements on the structure.

- 1) The wireless provider is solely responsible for the cost of all stealth and concealment elements and the installation of other elements required by the Town.

- 2) The wireless provider is responsible for the performance of and any costs incurred for regular upkeep, maintenance and replacement (if necessary) of these stealth and concealment elements.
- e) Architectural Integration with Surrounding Area
- 1) The new wireless support structure shall be designed in consultation with various internal Town stakeholders and may include external stakeholders.
 - 2) No new wireless support structure shall be constructed without the consent and simple majority approval of the key stakeholders.
 - 3) The Town may require the new wireless support structure to be constructed of a specific material that will enhance the stealth and concealment of the site.
- f) Pole Foundation
- 1) The pole foundation for the wireless support structure, if required, shall conform to civil and structural engineering standards acceptable to the Town, with design modifications for wireless communications equipment and cables.
 - 2) The height of the pole foundation shall be two (2) inches above finished grade. However, if the pole foundation is adjacent to or within a sidewalk or ramp, the height of the pole foundation shall be flush with the surface of the immediate area.
 - 3) Shrouds for the pole mounting bolts may be required.
- g) Painting of Wireless Support Structure, Antennas and Mounting Equipment
- 1) The Town shall identify the paint colors, location of paint and any decorative work that may be painted onto the new wireless support structure.
 - 2) The Town shall identify the paint colors for the antennas, antenna mounting brackets and posts, antenna shrouds, and cables.
 - 3) The Town may require the new wireless support structure to be painted using a powder-coat process.
- h) Ground Mounted Equipment
- The Town may require the ground-mounted wireless equipment to be screened or concealed to reduce the visual impact to the surrounding area. The screening or concealment shall take into account the location of the site, the use of the immediate area, and the existing aesthetic elements surrounding the site.

Town of Oro Valley
Small Wireless in the ROW

Common Standard Design Concepts, Requirements and Details

The following standard design requirements shall be applied to all new small wireless facilities in the Town's ROW, whether for a small wireless facility to be installed on an existing or replacement streetlight pole, an existing or replacement traffic signal pole, an existing or replacement utility pole, or on an existing or new wireless support structure.

A. Pole Design & Installation

1. Replacement Pole Clearances – Underground Utilities

All ground-mounted electrical equipment shall maintain minimum horizontal clearance from underground utilities.

a) The wireless provider shall obtain horizontal and vertical clearances by all affected utilities.

a) In the case where there is an issue with vertical or horizontal separation from other underground utilities, the wireless provider may elect to work with the impacted utility to have lines, pipes or property moved so that minimum clearance is achieved. All relocation of Town-owned or a privately-owned utility shall be at the sole expense of the wireless provider.

2. Calculating the Base Height of an Existing Pole

The base height, from which the calculation of the “increase in pole height” is referenced for determining the overall pole height, shall be calculated as follows:

a) Streetlight Pole (see *Exhibit A1 and A2*)

1) A streetlight with a separate luminaire mast arm mounted to the vertical pole shall use the top of the vertical pole as the base height.

2) A streetlight, with the luminaire mast arm integrated (e.g. telescopic style pole) into the top vertical section of the pole, shall use the point on the pole where the mast arm is connected plus twenty-four (24) inches as the base height.

b) Traffic Signal Pole (see *Exhibit B*)

A traffic signal pole with a luminaire mast arm that is mounted above the signal head mast arm to the pole shall use the top of the vertical portion of the pole as the base height.

3. Replacement Pole Clearance – Original Streetlight Pole or Traffic Signal Pole

The replacement pole shall be placed in the same location as the original pole or as determined by the Town Engineer or affected utility.

4. Replacement Pole Clearances – Sidewalks

The new or replacement pole shall maintain twelve (12) inch minimum clearance distance from sidewalks. The Town, in its sole discretion, may increase that minimum clearance on a case-by-case basis to ensure the safe use of the sidewalk and adjacent area.

5. Sight Distance Easements (SDE) and Sight Visibility Triangles (SVT)

All new and replacement poles shall be installed in a location that does not impair or interfere with SDE or SVT safety requirements.

6. Cables, Wires and Jumpers

- a) All cables for the wireless equipment and antennas – except where such cables or wires attach to the ports in the antenna – shall be located inside a conduit, inside the caisson and pole. There shall not be any “dog house” or externally visible conduit or entry point of the cables unless specified by the Town.
- b) All electrical wires for the streetlight luminaire, traffic signal heads, and any Town device on the pole shall be new and connected to the existing power source.

7. Hand-holes

- a) All hand-hole locations shall be called out on the plans and require approval by the Town based on structural evaluation.
- b) All hand-holes near antennas shall have the top of the hand-hole no lower than the bottom height of the antennas.
- c) The bottom of the hand-hole should not exceed six (6) inches below the bottom of the antenna.

8. Wireless Facility Identification Information

- a) A four (4) inch by six (6) inch Radio Frequency Safety notice may be mounted no less than twenty-four (24) inches from the bottom of the antenna, facing away from traffic.
- b) The wireless provider may place a discreet site identification or number. The size, color and location of this identifier shall be determined by the Town.
- c) No wireless provider signs may be placed on a streetlight, traffic signal pole, wireless support structure, or a new or replacement pole except to the extent required by local, state or federal law or regulations.

9. Interference with Town Wireless Network

- a) The selection of a proposed location for a wireless communication facility shall consider the potential interference with any Town operated networks
- b) The Town may require the wireless provider to provide a survey and/or technical report to determine the potential for interference with Town networks and if deemed necessary, may require a re-design or re-location of the proposed structure in order to remove the interference.

10. Cable Chase and Dog Houses

The Town, in its sole discretion, shall determine if an exterior cable chase and dog house are aesthetically compatible with the pole and immediate area. The materials and paint color of the cable chase and dog house shall be determined on a case-by-case basis.

B. Removal of Original Pole, Equipment and Pole Foundation

1. Removal of Original Signal Pole, Mast Arm, Signal Heads and Luminaire
 - a) The Town shall determine what original components, (e.g., original pole, mast arm, signal heads and luminaire, etc.) shall be delivered at no cost to the Town, to the Town's Street Transportation Operations Yard by the wireless provider.
 - b) If the Town accepts some of the original components, then only those components shall be delivered by the wireless provider to the Town' Street Transportation Operations Yard and the remaining components shall be discarded by the wireless provider.
2. Removal of Original Streetlight or Traffic Signal Pole Foundation

The concrete pole foundation for the original streetlight or traffic signal pole shall be removed by the wireless provider as instructed by the Town:

 - a) Complete Removal

If the entire original pole foundation must be removed, then all materials (concrete, rebar, metals, bolts, etc.) shall be removed. The Town's Inspector shall determine, on a case-by-case basis, the type of backfill material and compaction required – ranging from native soil that is compacted to a half (1/2) sack slurry for the entire depth, or a combination of native soil and slurry.

C. Antennas, RRH/RRU, Cables and Mounting on Pole:

1. *General Requirement:* All antennas shall be installed in a manner that minimizes the visual impact to the general public. All work shall be performed in a professional manner that is consistent with the highest standards of workmanship.
2. *Specific Criteria:*
 - a) Antenna Mounting Posts and Brackets
 - 1) All panel antennas shall be mounted directly to the pole or onto a mounting pole so that the distance from the "face" of the streetlight pole to the back of the antenna does not exceed nine (9) inches.
 - 2) All mounting posts shall be trimmed so that the poles do not extend higher than the top of the antenna or protrude lower than the antenna unless necessary to install the shroud.
 - 3) All pole attached wireless equipment must be a minimum ten (10) feet from the sidewalk elevation.
 - b) Panel Antennas
 - 1) All panel antennas for a small cell site shall fit within an imaginary enclosure of not more than six (6) cubic feet in volume in accordance with A.R.S. §9-591(19)(a). (NOTE: This volume does not include antenna cable shrouds when required.)

- 2) All panel antennas with exposed cables from the bottom of the antenna shall have a shroud installed on the antenna or antenna mounting posts to conceal the cables. (see Exhibits D1 and D2)
 - a. The type of shroud may be a forty-five (45) degree angle (away from the bottom of the antenna; toward the pole) or a ninety (90) degree angle (parallel to the bottom of the antenna) depending on the location of the site.
 - b. The shroud shall extend from the bottom of the antenna to two (2) inches below the bottom of the nearest hand-hole.
- c) Canister Antennas
 - 1) All canister antennas shall fit within an imaginary enclosure of not more than six (6) cubic feet in volume. (Note: This volume does not include the canister as it is a stealth device and not the antenna.)
 - 2) The canister shall be no larger than eighteen (18) inches in diameter (OD).
 - 3) All canister antennas shall be located in a canister that is mounted to a base plate at the top of the vertical section of the replacement pole.
 - 4) All cables protruding from the canister shall be concealed within the canister or by a shroud at the point where the canister is mounted to the base plate.
- d) Remote Radio Heads (RRH) / Remote Radio Units (RRU)

Under State Law §9-591(19)(a), the RRH/RRU is not considered part of the antenna. If allowed, the RRH/RRU shall be calculated as part of "All other wireless equipment associated with this facility..." in A.R.S. §9-591(19)(b) that is subject to the twenty-eight (28) cubic feet maximum size for small cell sites.

 - 1) On a case-by-case basis, the Town in its sole discretion and – upon reviewing the landscape in the immediate surrounding area, the location of the pole, and stealth options, may allow a site to have an RRH/RRU installed on the pole.

D. Ground-mounted Equipment:

1. *General requirement:* All ground-mounted equipment shall be installed in a manner that minimizes the visual and ingress/egress impact to the general public. All work shall be performed in a professional manner that is consistent with the highest standards of workmanship.
2. *Specific criteria:*
 - a) Sight Distance Easements (SDE) and Sight Visibility Triangles (SVT)

All ground-based wireless equipment shall be installed in a location that does not impair or interfere with SDE or SVT safety requirements. To ensure proper sight distance, all Town of Oro Valley Standards shall apply.
 - b) Ground Equipment Location – Generally

All ground-based wireless equipment, including but not limited to equipment cabinets or power pedestals, shall be placed as far as practical to the back of the ROW while maintaining at least three (3) feet of ingress/egress in the ROW or public utility easement (PUE) around the equipment.

c) Ground Equipment Clearances—Underground Utilities

- 1) All ground mounted electrical equipment shall obtain horizontal and vertical clearances by all affected utilities.
- 2) In the case where there is an issue with vertical or horizontal separation from other underground utilities, the wireless provider may elect to work with the impacted utility to have its lines, pipes or property moved so that minimum clearance is achieved. All relocation work of Town-owned or a privately-owned utility shall be at the sole expense of the wireless provider.

d) Ground Equipment Clearance – Sidewalks

The ground equipment shall maintain a minimum twelve (12) inch clearance distance from sidewalks. The Town, in its sole discretion, may increase the minimum clearance on a case-by-case basis to ensure the safe use of the sidewalk and adjacent area.

e) Compliance with Height Requirements

Evidence or documentation that, where the above-ground structure is over thirty (30) inches in height, given its proposed location, the structure will comply or be in compliance with applicable Town of Oro Valley standards. The Town Code, Zoning Code and Subdivision Street Standards can be found at www.OroValleyAz.gov.

f) Screening of Ground Equipment

The Town, in its sole discretion, may require the ground-mounted equipment to be screened; the type of screening materials and design will be addressed on a case-by-case basis.

- 1) In cases when screening is not required, the Town may specify the paint color of the ground-mounted equipment.

g) Decals and Labels

- 1) All equipment manufacturers' decals, logos and other identification information shall be removed unless required for warranty purposes.
- 2) The wireless provider of the site may place an "Emergency Contact" decal or emblem to the ground equipment.
- 3) The ground-mounted equipment shall not have any flashing lights, sirens or regular noise other than a cooling fan that may run intermittently.

h) Equipment Cabinets on Residential Property

- 1) Air-conditioning Units

Unless otherwise specified by Town, a wireless equipment cabinet with air-conditioning (not a fan only) shall be enclosed by walls and setback a minimum of fifteen (15) feet from lots where the existing or planned primary use is a residential single-family dwelling and shall not emit sound greater than 40 decibels as measured 12” beyond the enclosure.

- i) Electric Company Meter
 - 1) All electric company meters shall be installed in the ROW or PUE. The location of the meter equipment shall have minimum ingress and egress clearance from private property lines and driveways.
 - 2) All electric company meters shall maintain minimum clearance from above-ground utility cabinets and below-ground utilities.
 - 3) All electric company meters shall be installed in a location that does not impair or interfere with the SDE or SVT safety requirements of the Town.
 - 4) The electric company meters shall be screened or contained within a “Myers-type” or “Milbank-type” pedestal cabinet that is painted to match the ground equipment or as specified by the Town. (see *Exhibit E*)
 - 5) In the case where screening is not required, the Town may specify the paint color of the electric company meter cabinet on a case-by-case basis.

Town of Oro Valley Contacts

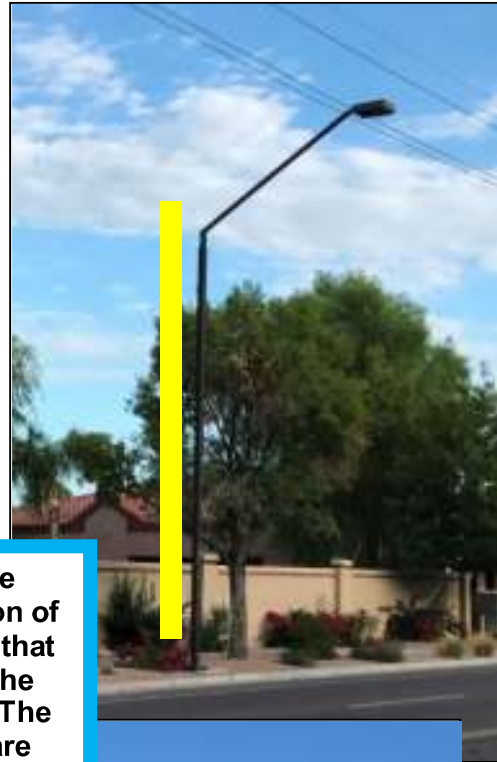
For questions regarding the 2017 Town of Oro Valley Design Standards, Concepts & Requirements for Wireless Facilities in the Right-of-Way, contact:

**Planning and Zoning Administrator
(520) 229-4800**

**Town Engineer
(520) 229-4800**

Exhibit A1

Calculation Points for Height of an Existing Streetlight with Separate Luminaire Mast Arm



The purple line next to the streetlight depicts the section of the existing streetlight pole that shall be used to calculate the height of the existing pole. The lines are not to scale and are solely used for illustrative purposes.



Exhibit A2
Calculation Points for Height of an Existing Streetlight with Integrated Luminaire Mast Arm



The "Connection Point" on an Existing Telescopic Style Streetlight Pole with an Integrated Luminaire Mast Arm

The Top and Bottom Points
on a Telescopic Streetlight
Pole to Calculate the
Vertical Height of the
Existing Streetlight Pole
PLUS
Twenty-four (24) inches

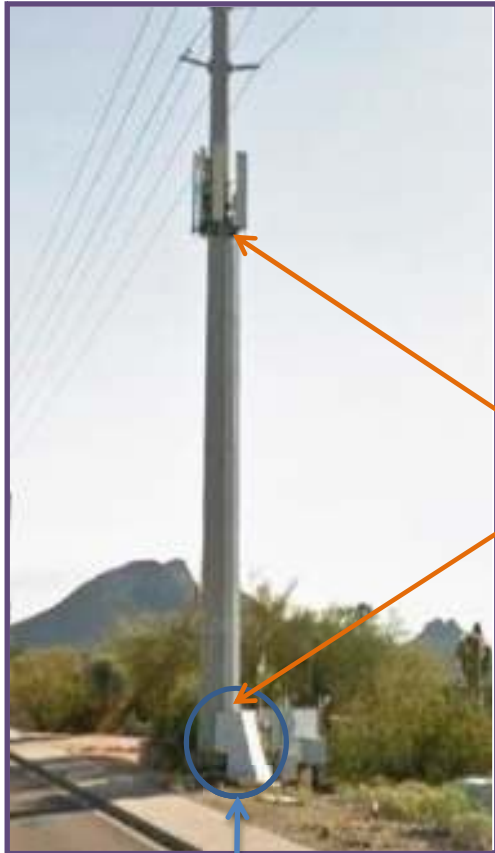


Exhibit B
Calculation Points for Height of Existing Traffic Signal Pole



The Top and Bottom Points on a Traffic Signal Pole to Calculate the Base Vertical Height of the Existing Pole

Exhibit C
Dog House – Cable Transition from Underground to Electric Utility Pole



External cable chase – the cables and wires are mounted underneath the chase.



“Dog House” with external cable chase installed at the base of a pole to cover the cables and wires when they cannot be installed inside the utility pole.

Exhibit D1
Antenna Shrouds – 45 Degrees



Exhibit D2
Antenna Shrouds – 90 Degrees



Exhibit E
Examples of Electrical Meter Pedestals – “Myers” or “Milbank” Style

