

# **SIGN CRITERIA FOR**

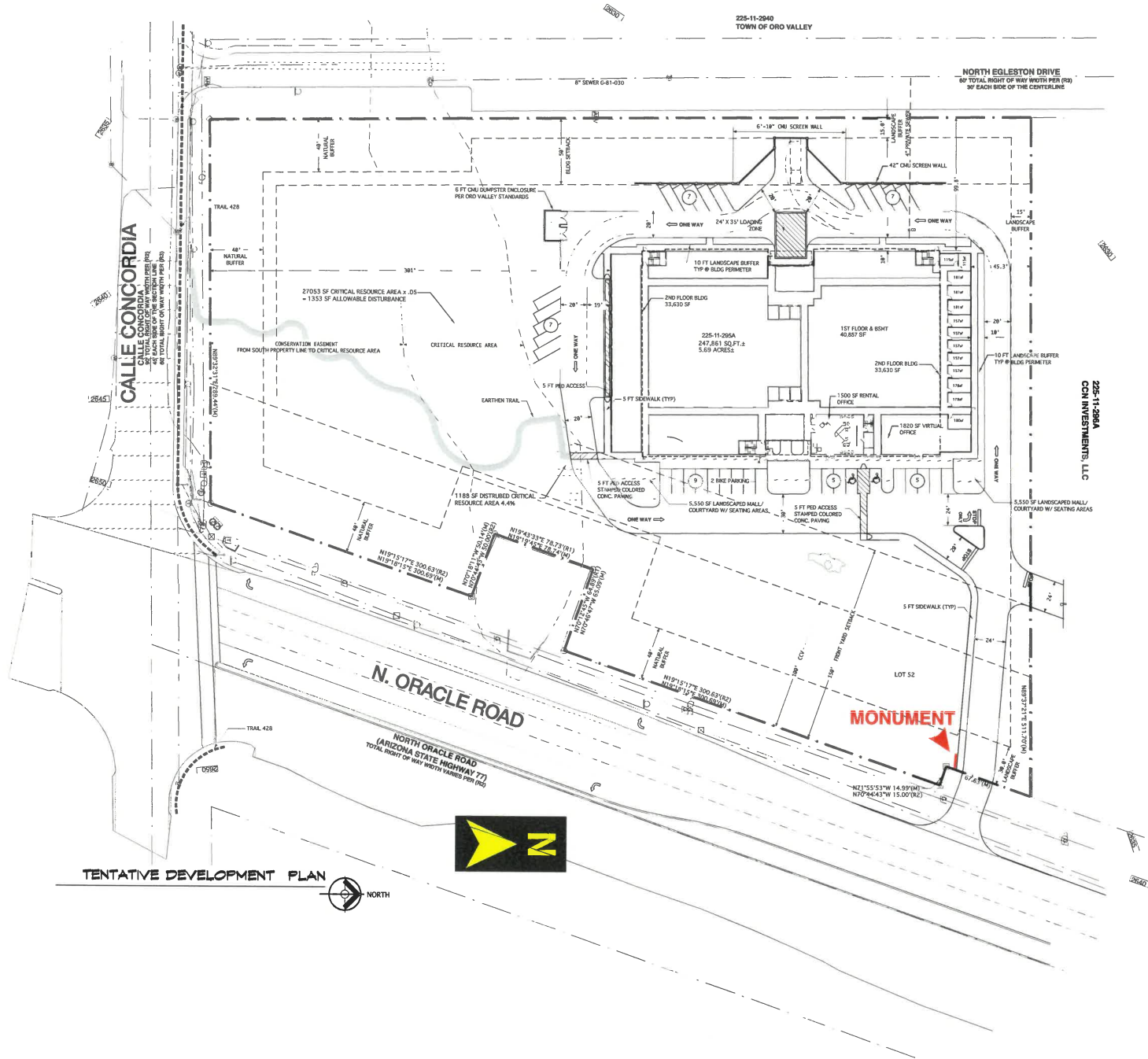
**OV SELF STORAGE**

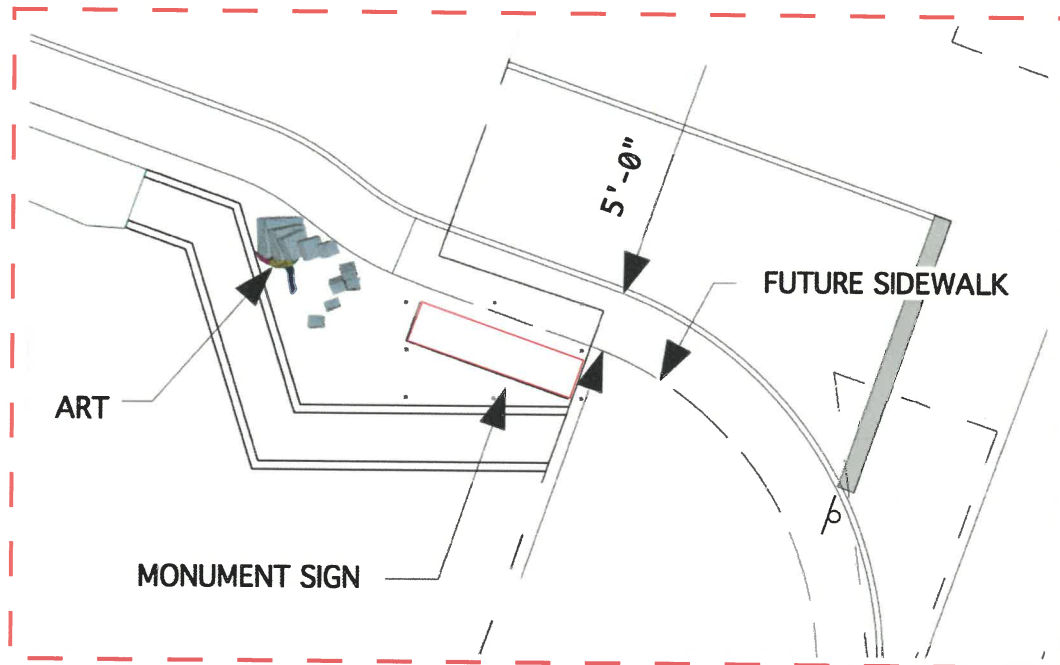
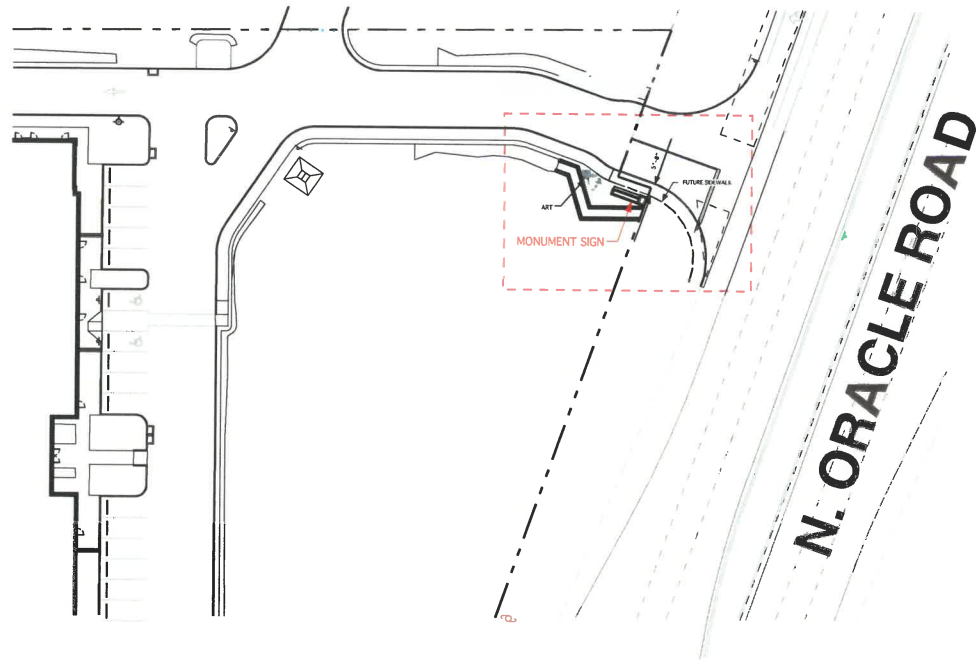
**AND OFFICE CENTER**

**9255 N. ORACLE ROAD**

**ORO VALLEY ARIZONA**

**SITE MAP - OV Self Storage & Business Center - 9255 N. Oracle Road, Oro Valley AZ 85704**





**OV SELF STORAGE  
AND OFFICE CENTER  
9255 N. ORACLE ROAD  
SIGN CRITERIA**

**INTRODUCTION**

This sign criteria is established for the purpose of assuring that all signs will complement the building design while allowing the signs to have a choice of colors and conform to the Town of Oro Valley's Sign and Zoning Codes.

**GENERAL REQUIREMENTS**

1. Owner or owner's authorized agent shall obtain approved sign permits before installation of any sign.
2. Only signs that are allowed per this criteria are allowed.

**GENERAL SPECIFICATIONS**

1. No flashing or animation signs are allowed.
2. Illuminated signs require a time clock that is set to TOV lighting code.

**DESIGN REQUIREMENTS**

**BUILDING SIGNS**

1. Main building signs shall be Raceway mounted Channel Letters or Reverse Pan Channel (Halo illuminated) Letters. Signs can be either illuminated or non-illuminated.
2. West Elevation Building signs to be non-illuminated.
3. Halo illuminated signs shall be white internal illumination as needed.
4. Size of all signs shall conform to TOV Sign Code allowed square footage allowances.
5. All illuminated signs shall have a Kelvin Temperature as per TOV lighting codes.
6. Any applied vinyl (window/door) shall conform to TOV sign code.
7. On site Directional, Directory or Pedestrian Tenant Directory as allowed by the Oro Valley Zoning Code shall be allowed provided they match or blend in with building or monument signs on site.
8. Logos will be limited to 40% of the allowed sign area

## **MONUMENT SIGN**

1. One monument sign on Oracle Road is allowed per TOV Sign Code. Sign shall have aluminum construction. Sign Face(s) shall be routed aluminum face with acrylic laminated to the back. Sign will display only the copy at night and the background shall not illuminate.
2. Sign height shall comply with TOV Sign Codes.
3. The design shall incorporate some elements of the building.
4. All illuminated signs shall have a Kelvin Temperature as per TOV Sign Codes.

## **DIRECTIONAL SIGNS**

1. Directional signs are allowed as needed per TOV Sign Code. Signs shall have aluminum construction with white acrylic face. Background to be opaque vinyl with the copy showing.
2. Sign can be either illuminated or not.
3. All illuminated signs shall have a Kelvin temperature as per TOV Sign Codes.

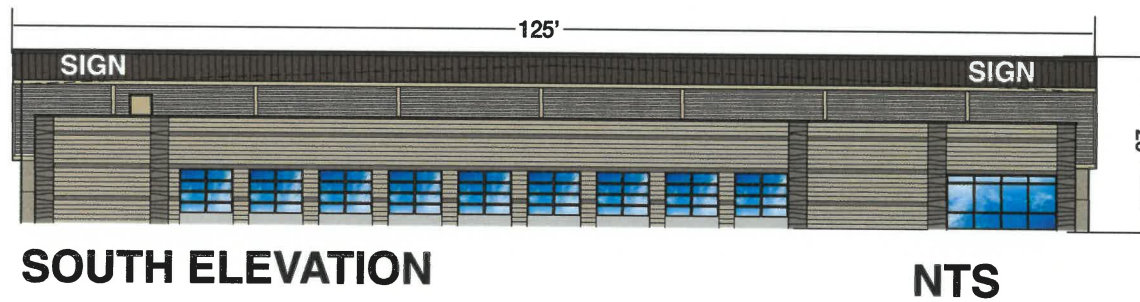
## **DIRECTORY SIGNS**

1. Directory signs are allowed per TOV Sign Code. Signs shall have aluminum construction with white acrylic face, opaque background with copy showing.
2. Sign can be either illuminated or non-illuminated.
3. All illuminated signs shall have a Kelvin Temperature as per TOV Sign Codes.

## **MISCELLANEOUS REQUIREMENTS**

1. A-Frames, banners or other types of signs not listed in this criteria but allowed under TOV Sign and Zoning Codes are allowed.
2. Permits shall be obtained before displaying any sign.

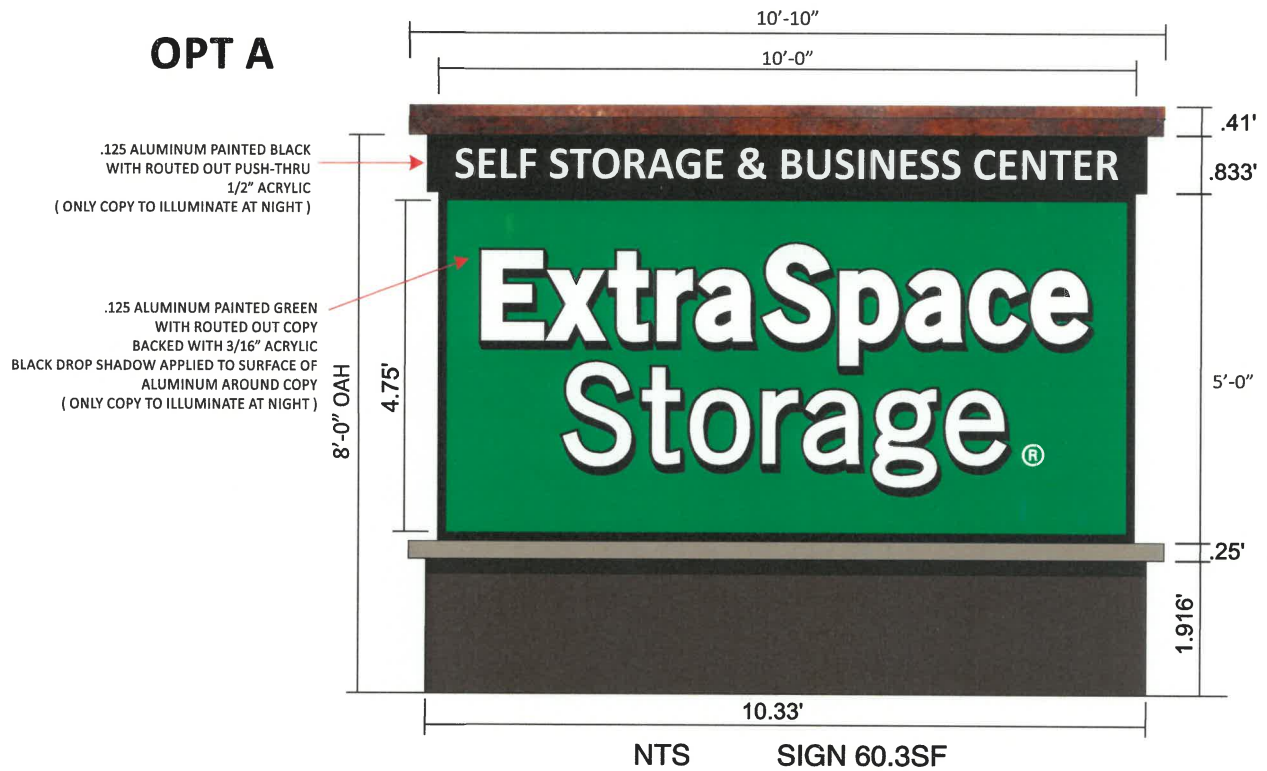
# ELEVATION DRAWINGS





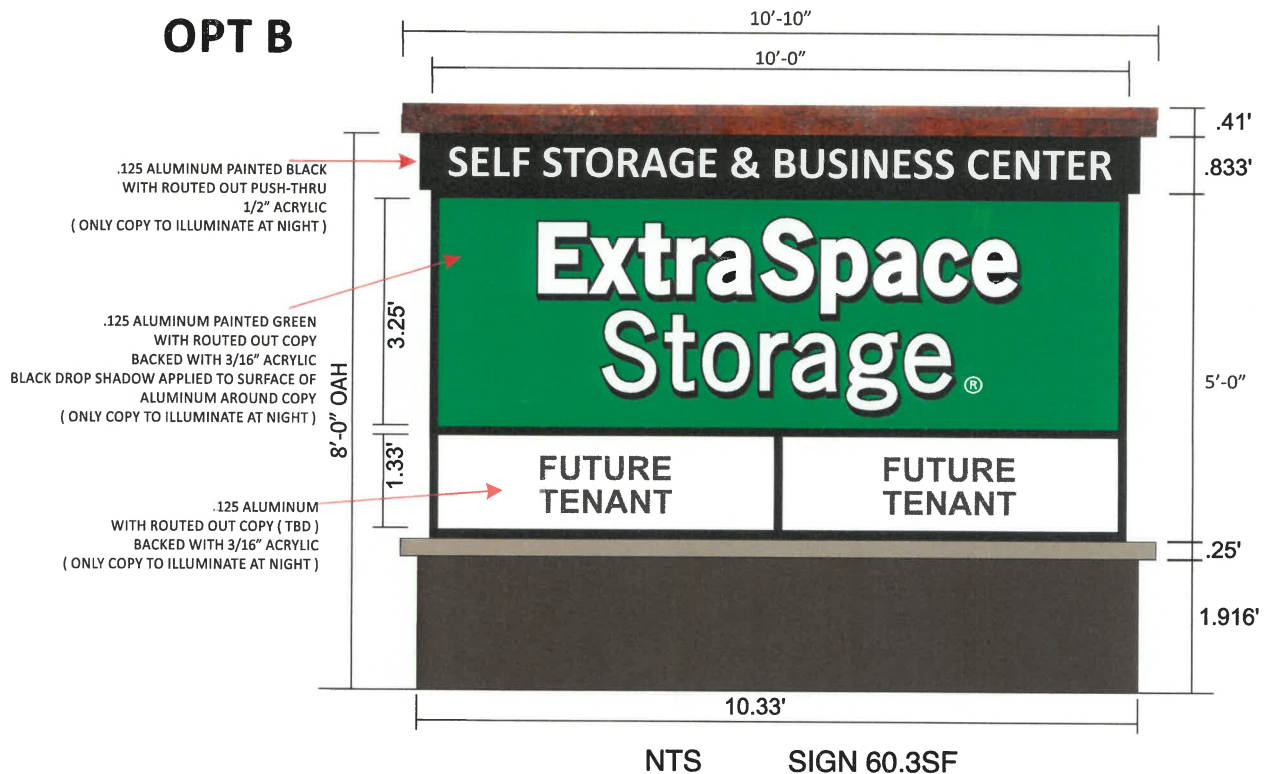
# MONUMENT SIGN

## OPT A



BROWN RUST BLACK BLUSH

## OPT B



# COLOR PALETTE

## WALL SIGN COLORS

 WHITE	 YELLOW
 BLACK	 DURANODIC
 GRAY	 ORANGE
 BLUSH	 DARK BRONZE
 RUST	 PURPLE
 BROWN	 IVORY
 TAN	 TURQUOISE
 GREEN	 BEIGE
 BLUE	 TEAL
 RED	

## MONUMENT COLORS

### COLORS TO BE USED FOR PANELS

 WHITE	 YELLOW	 GREEN
 BLACK	 DURANODIC	 BLUE
 GRAY	 DARK BRONZE	 RED
 RUST	 PURPLE	 BLUSH
 BROWN	 IVORY	 TEAL
 TAN	 TURQUOISE	

### COLORS TO BE USED FOR MONUMENT CONSTRUCTION

 BROWN	 BLACK	 BLUSH	 RUST
---	---	---	---