

# Northwest Medical Center Oro Valley

## Comprehensive Sign Program

June 10, 2003

Prepared By Territorial Sign Company  
3400 E. Alvord  
Tucson, Arizona 85706  
520-294-3400  
[www.territorialsignco.com](http://www.territorialsignco.com)

## **Contents**

Purpose

Way Finding Signs

Corporate Center Entry Sign

Main Entry Sign

Secondary Entry Signs

Traffic Directional Signs

Parking Signs

Temporary Marketing Sign

Building Wall Signs

Future Development

## **Purpose**

The purpose of this sign program is to develop a consistent design theme throughout the hospital campus

This program has been designed to provide an aesthetically pleasing visual impact and at the same time easily direct visitors to the hospital and its related medical facilities.

This program is intended to follow the general guidelines of both the Town of Oro Valley Sign Code and the Rancho Vistoso Guidelines. However, due to the uniqueness of the hospital setting certain elements of this proposal do not conform to all specific regulations and are therefore proposed for approval in this Comprehensive Sign Program

## **Way Finding Signs**

### **Corporate Center Entry Sign - CC1**

Function: To identify the hospital as a part of The Corporate Center

Note: Sign is to be constructed in conjunction with Vistoso Partners.

Design is currently being designed

### **Main Entry Sign - ME1**

Function: To identify the main entrance and create a safe flow of traffic into the hospital.

Construction: Aluminum cabinets with internal illumination. Rock base typical of walls within Rancho Vistoso

Quantity: One

### **Secondary Entry Signs - SE1**

Function: Identify Secondary Entrances on Innovation Blvd.

These entrances include the Ambulance Entrance and Surgery Entrance.

Construction: Aluminum Cabinet with internal illumination. Rock base typical of walls within Rancho Vistoso

Quantity: Two

### **Traffic Directional - TD1**

Function: Direct visitors to specific locations.

Construction: Aluminum cabinet with internal illumination. Rock base typical of walls within Rancho Vistoso.

Quantity: Four

### **Parking Signs - PS1**

Function: Identify specific parking areas.

Construction: Aluminum post and panel. Non-illuminated

Quantity: To be determined

### Temporary Marketing Sign

Function: Identify parcel usage

Construction: Wood Frame with vinyl graphics

Quantity: One

### Building Wall Signs

Function: Identify the hospital and major points of entry

Construction: Aluminum reverse pan channel letters with backlit halo illumination.

Exception: The word "EMERGENCY" shall be aluminum pan channel letters with red illuminated faces

Quantity: 1.5 square foot of signs for each linear foot of building frontage per elevation

### Future Development

Future development will require additional signs to successfully direct patients and visitors through the hospital campus. The intent of this plan is to maintain a consistent design theme for future development



B I G W A S H

- ME-1 = Main Entry
- SE-1 = Secondary Entry
- TD-1 = Traffic Directional
- CC1 = Corporate Center
- = Parking Signs

TD-1

TD-1

SE-1

SE-1

ME-1

TD-1

TD-1

CC1

Temporary  
Marketing  
Sign



NORTHWEST ORO VALLEY





---

Corporate Center Entry Sign



TERRITORIAL  
SIGN CO.  
3400 E. ARIZONA RD.  
TUCSON, AZ 85726  
520.294.3400

Job:  
Client:  
Date:  
Scale:  
Designer:  
Colors:

Material:

Notes:

Notes:



Main Entry (ME-1) typical

**TERRITORIAL  
SIGN CO.**  
3400 E. AIRFORD RD.  
TUCSON, AZ 85726  
520.294.5400

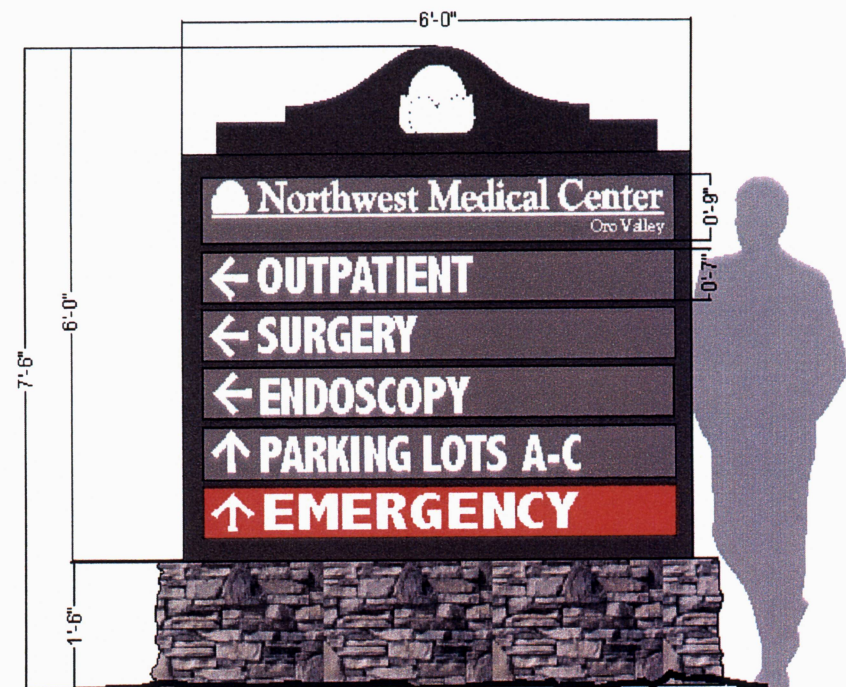
Job:  
Client:  
Date:  
Status:  
Designer:  
Colors:

Materials:

Notes:



Secondary Entry (SE-1) typical



Secondary Entry (SE-1) typical

**OWNERSHIP OF DOCUMENTS**

Drawings and specifications are property of Territorial Sign Company, and the work for which they are made is intended to be used, and only apply to the work and any other work, in whole or part, subject to agreement with Territorial Sign Company.

Approved By: \_\_\_\_\_ Date: \_\_\_\_\_



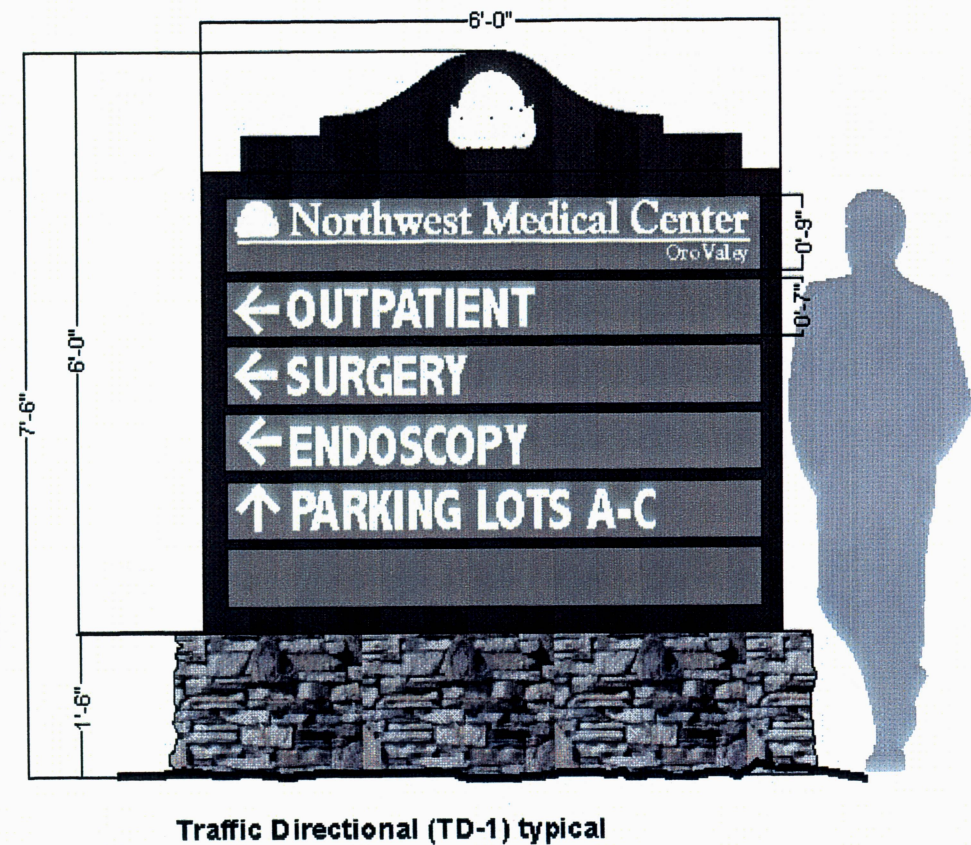
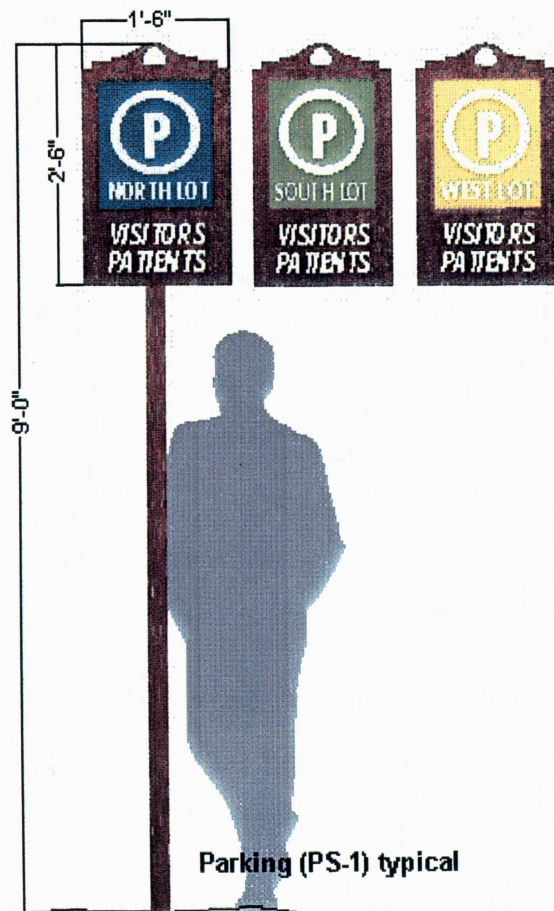
**TERRITORIAL  
SIGN CO.**  
5400 E. AIRVORD RD.  
TUCSON, AZ 85716  
520.294.3400

Job: \_\_\_\_\_  
Client: \_\_\_\_\_  
Date: \_\_\_\_\_  
Scale: \_\_\_\_\_  
Designer: \_\_\_\_\_  
Colors: \_\_\_\_\_

Materials: \_\_\_\_\_

Fonts: \_\_\_\_\_

Notes: \_\_\_\_\_

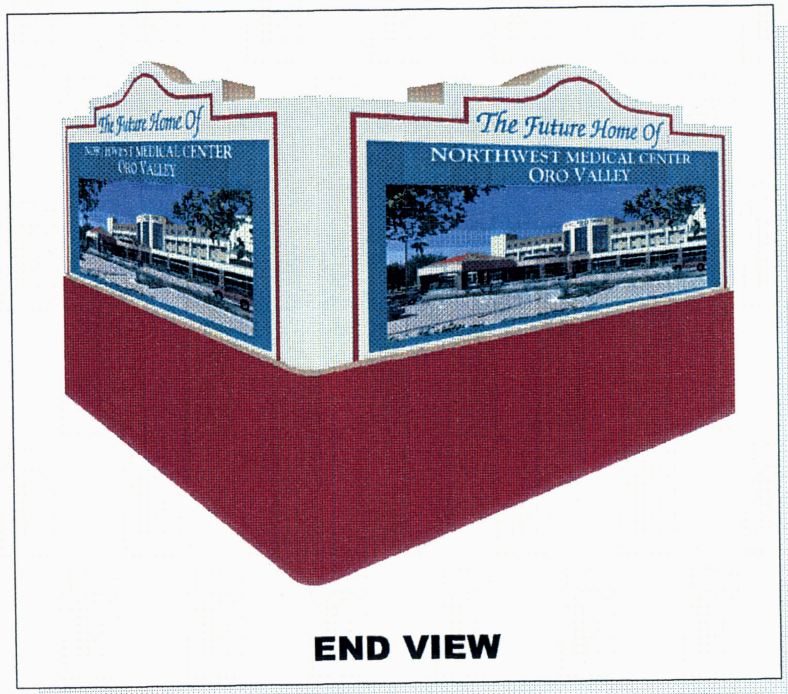


**OWNERSHIP OF DOCUMENTS**

Drawings and specifications are property of Territorial Sign Company. Neither the work nor the drawings are to be reproduced or used, in whole or in part, without the written consent of Territorial Sign Company.

Approved By: \_\_\_\_\_ Date: \_\_\_\_\_





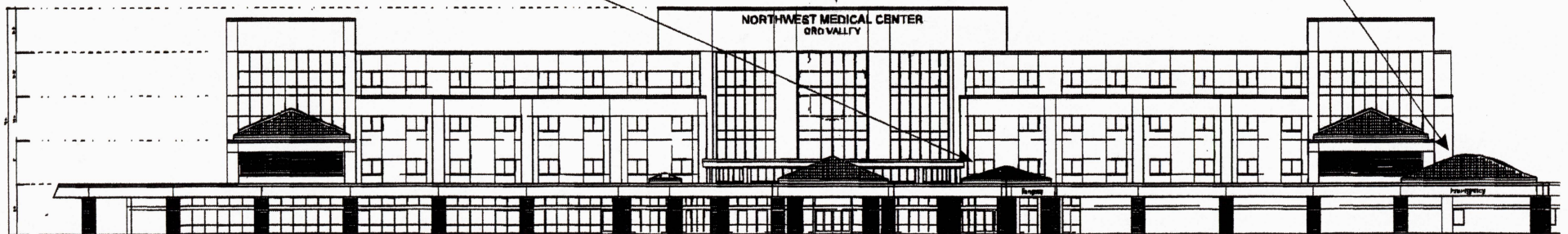
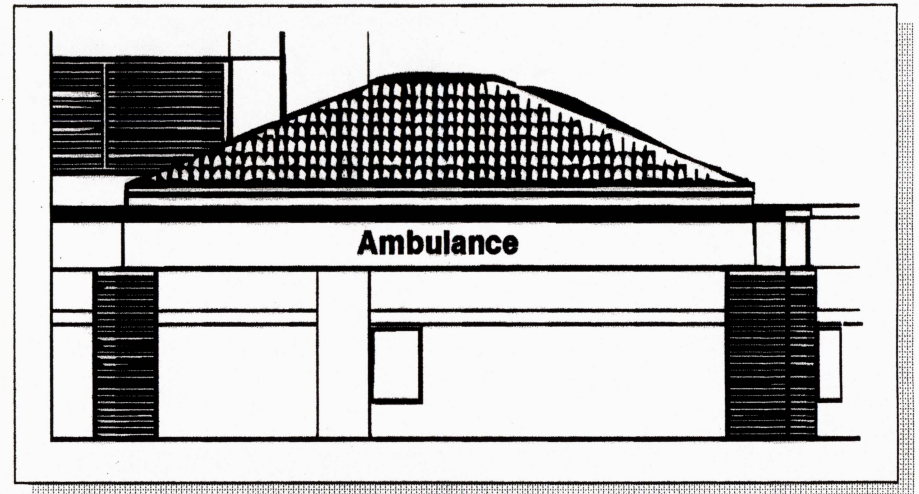
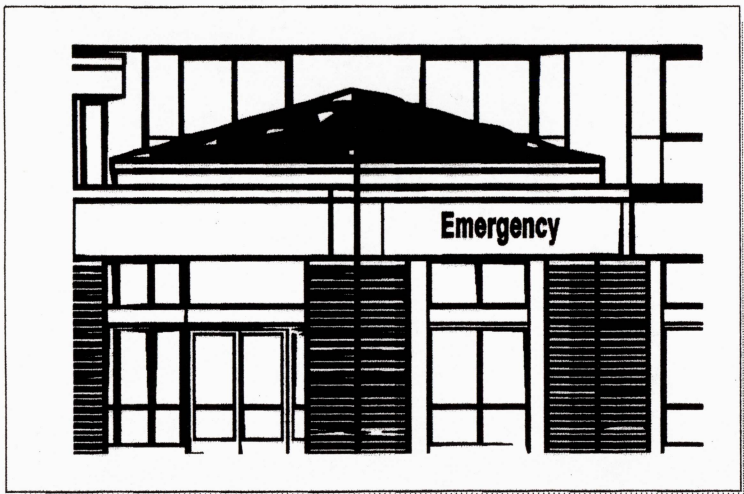
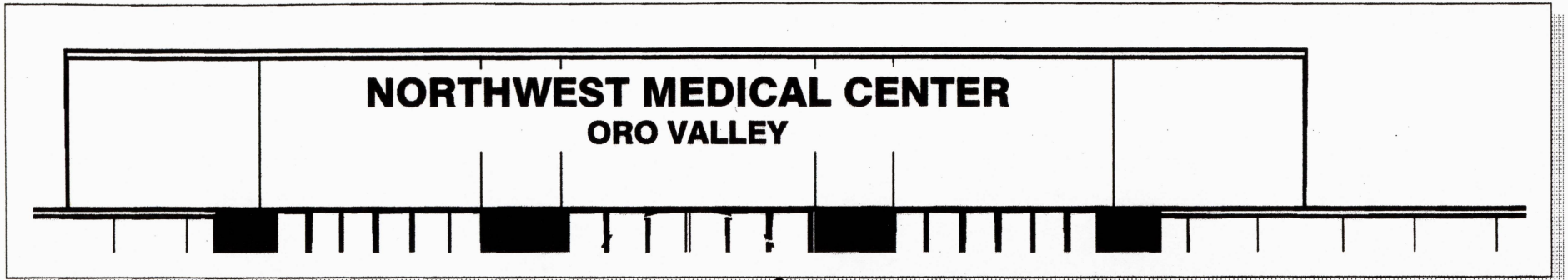
**END VIEW**

**TERRITORIAL**  
SIGN CO.  
TUCSON • ARIZONA  
EST. 1975



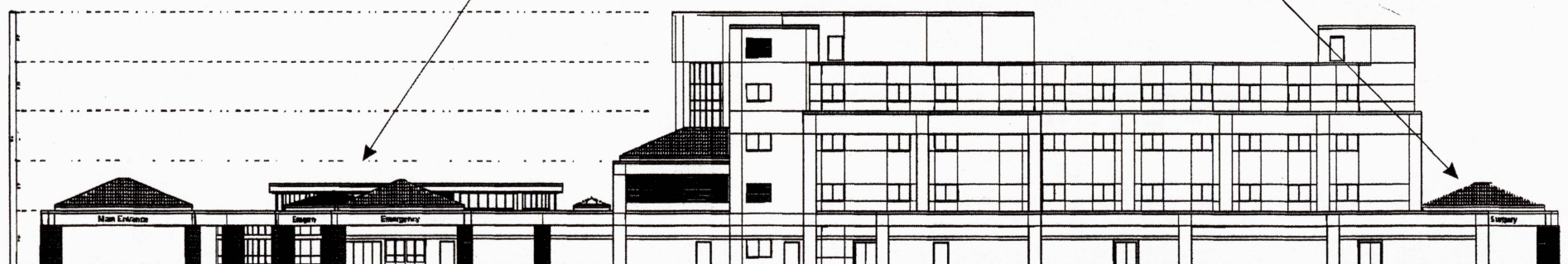
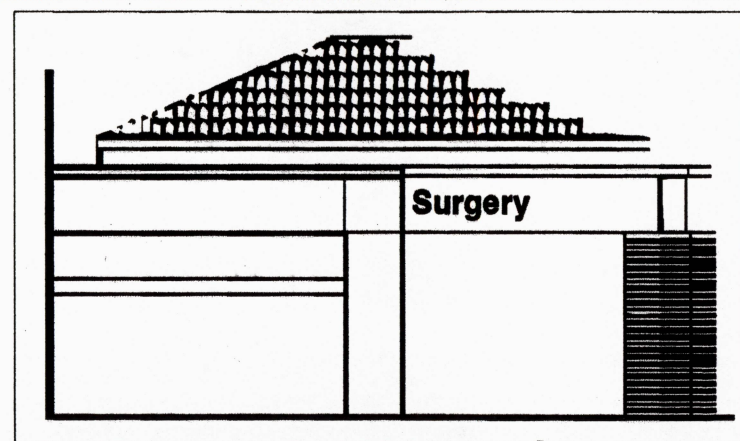
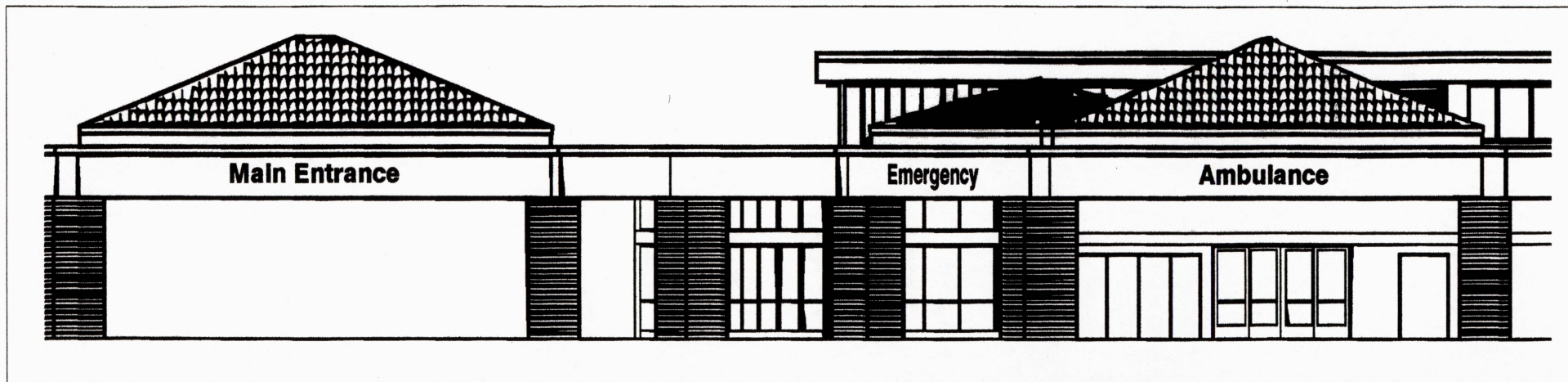
**FRONT VIEW**





**SOUTH ELEVATION "A"**

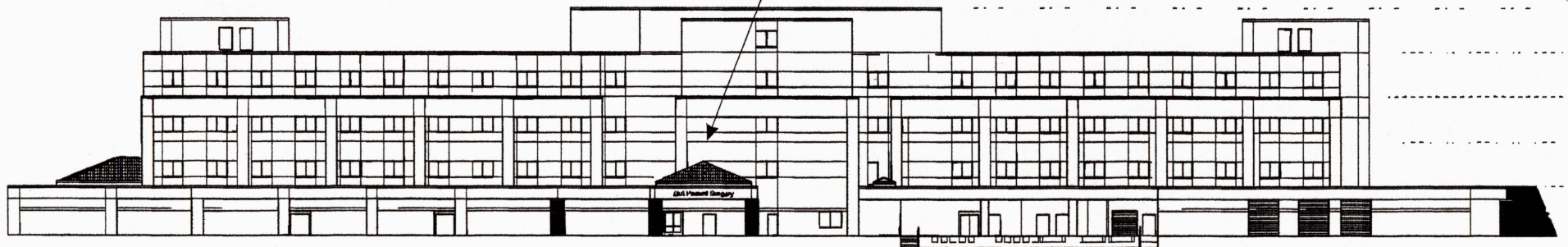
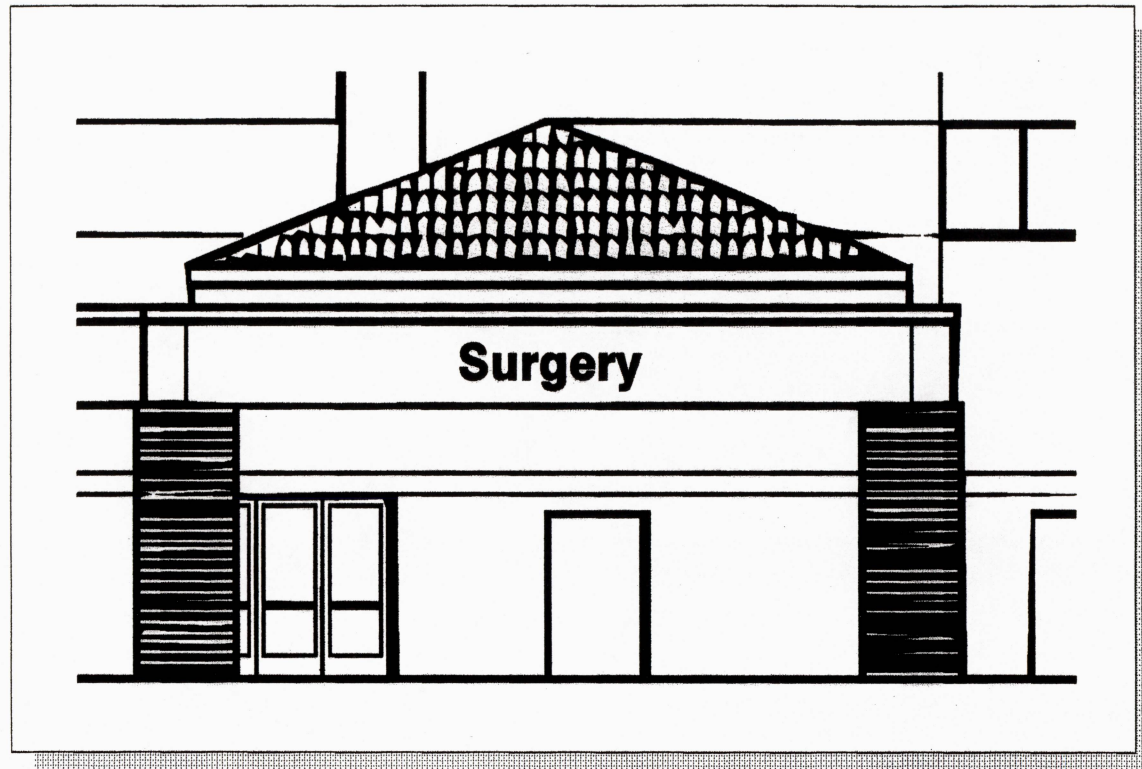




**B** EAST ELEVATION "B"

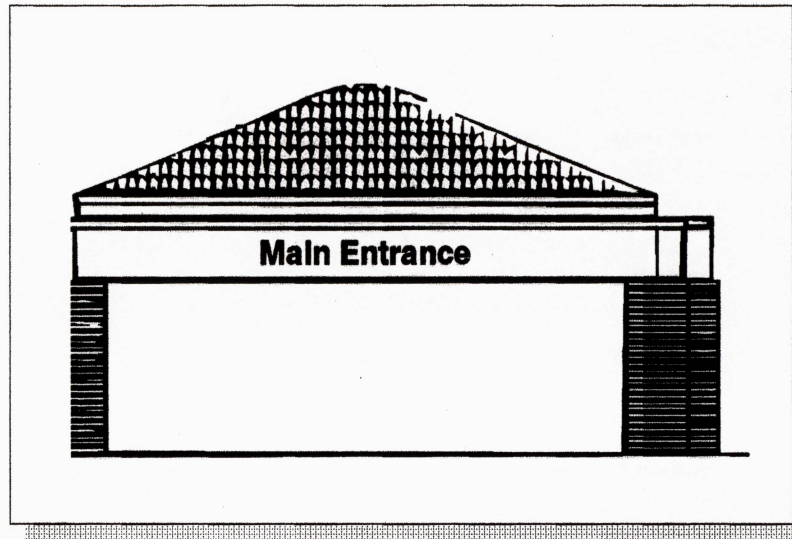






 NORTH ELEVATION "C"





**D** WEST ELEVATION "D"

